



# DIP

## DO IT BY PROFESSIONALS

### APPLICATION GUIDELINE

## FAIRMATE

## DESIGN CONCRETE - WALL

### [SWAY]

#### Step:1 Surface Preparation for the application of FAIRMATE DESIGN CONCRETE - WALL

The concrete substrate must be sound, and of sufficient compressive strength (min 25 N/mm<sup>2</sup>). The substrate must be clean, dry, and free of all contaminants such as oil, grease, coatings, and surface treatments, etc.

Weak concrete must be removed and surface defects such as blow holes and voids must be fully exposed. Repairs to substrate, filling of blow holes/voids and surface leveling must be carried out using suitable repair mortars.

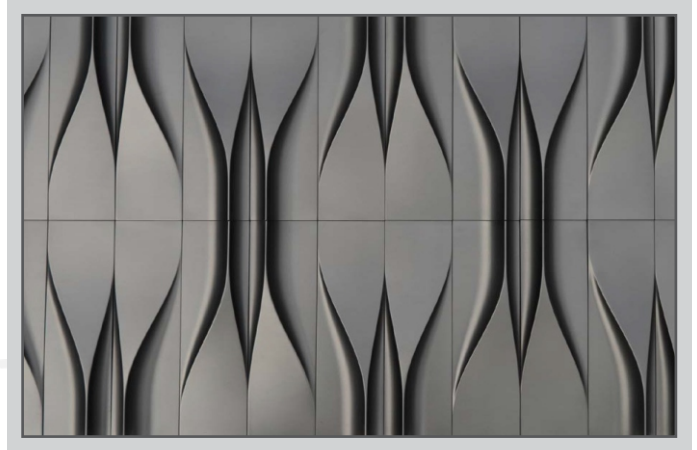
#### Step:2 Application of FAIRMATE DESIGN CONCRETE - WALL

Apply the product as per guidelines of the manufacturer. Before starting the application check the availability of approximate required material and equipments suggested by the manufacturer.

#### Step:3 Curing

Allow the surface to cure adequately suggested by the manufacturer for achieving full strength.

*Your problem-Our concern*



#### Step:4 Cleaning

After completion of the application verify the work with customer and clean the entire surface area before leaving the site.

#### WARRANTY

DIP provides the warranty for the work executed for the application. The following work shall be warranted for **12 month** from the date of completion. DIP gives a repair warranty for the work done and if any further damages what so ever it will not being covered under this. The warranty of DIP will be seized if any natural calamities or it has been damaged intentionally, is tampered, punctured by fasteners in any circumstances. This warranty will only applicable for the work executed by DIP and it will not have any other liabilities in your premises or your structure.

Our product partners



\*The information relating to the guidelines of the application are given in good faith based on our current knowledge and experience. In practice, the process may vary depending upon the actual site conditions.

The information given in this document is based on both the current development work and many years of field experience. Whilst every effort is made to ensure that the information is reliable, we cannot accept the responsibility for any work carried out with our materials as we have no control over methods of application, site conditions etc. The user of the product must test the product's suitability for the intended application and purpose. In view of the continuing research and development being undertaken in our laboratories, Fairmate reserves the right to change the properties of its products. We advise customers in their own interest to ensure that this data sheet has not been superseded by a more up-to-date publication. All products are sold subjected to our standard conditions of sale which are available on request. Field services, where provided, does not constitute supervisory responsibility. For additional information, please visit DIP website.

**SAROJ BUILDCON PVT. LTD.**  
3, Ramkrupa Apartment, B/h Center Point, Panchvati 1st lane,  
Ambawadi, Ahmedabad - 380006. (Guj.) India

Call: +91 9879613333  
support@dipsbpl.com  
www.dipsbpl.com

Follow Us:     